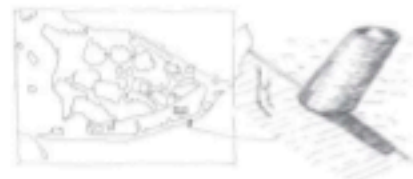
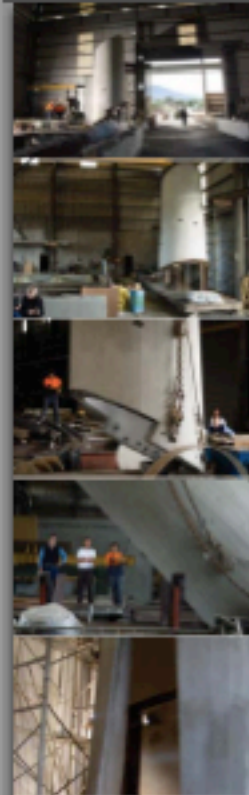


OPEN SKY



Located on the southern side of Ballast Point, directly on the harbour's edge, a tall, tilted cylindrical form is moored to the promenade. Its liminal position invites the passer-by to enter and be within the artwork. The artwork in its form and content loosely references the past industrial history of the newly established parkland – the fabric of which has been virtually erased from the site. The form echoes the Caltex tanks while the principle of the work structurally and conceptually is balance and ballast.

Robyn Backen is an interdisciplinary artist based in Sydney. In addition to her local career, she has an extensive exhibition history throughout Asia and Europe. She has been the recipient of a number of awards, including overseas study and residencies throughout the world. Her installations actively engage with the spaces they inhabit – whether gallery, landscape or building: the site provides the structural and associative framework for both formal and conceptual elements.

Ballast Point Park Public Art Team
Artist: Robyn Backen
Public Art Consultant: Amanda Sharrad
Architect: Neil Mackenzie, Mackenzie Prank Architects
Engineer: Stephen Maher, Northrop Engineers
Fabricator: Mick Davidovic, Obnova Concrete Pty Ltd
Installer: Ross McIntosh, McIntosh Constructions Pty Ltd
Images: Delicate Balance - Concept sketch, artwork progression to completion © 2008-2009
© Robyn Backen/Ian Hobbs. Sketch courtesy of Robyn Backen.



The object is made of frames ...framing Harbour water, the sky and the view back to the Ballast Garden.